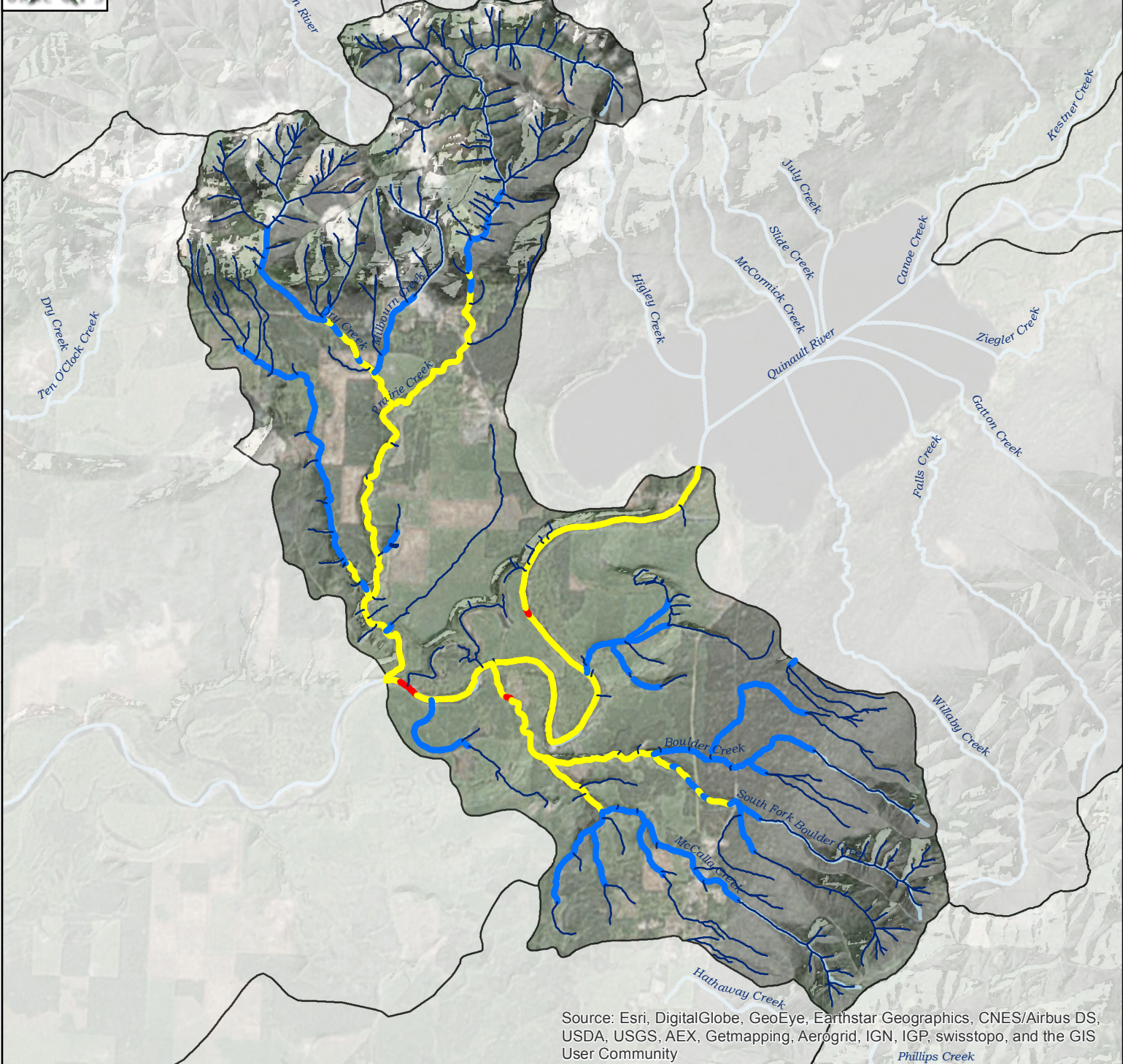




Prairie Creek-Quinault River



Source: Esri, DigitalGlobe, GeoEye, Earthstar Geographics, CNES/Airbus DS, USDA, USGS, AEX, Getmapping, Aerogrid, IGN, IGP, swisstopo, and the GIS User Community

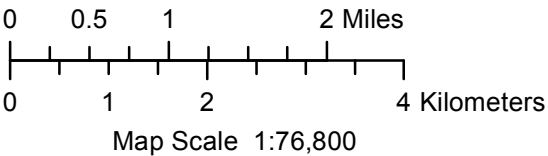
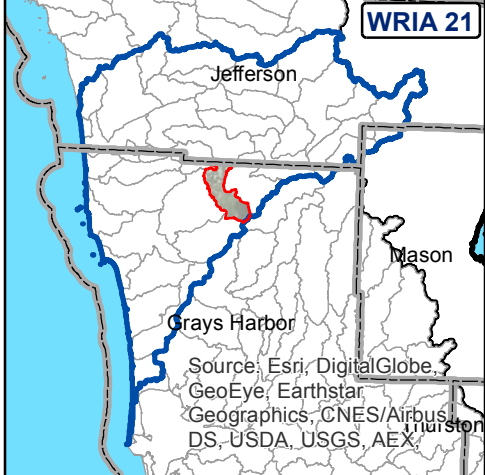
Maps By Keven Bennett
UW | ONRC GIS
11/18/2015

Intrinsic Potential Scoring for Chinook Spawning Habitat

—	0	
—	> 0 to 0.35	Low
—	> 0.35 to 0.70	Medium
—	> 0.70 to 1.00	High

WSC | ONRC 2012

Projection: UTM NAD83 10N Meters
For Detailed Documentation Go To:
http://www.onrc.washington.edu/MarinePrograms/IPOuterCoast/PostPhaseII_MapPortal.html

Source: Esri, DigitalGlobe, GeoEye, Earthstar Geographics, CNES/Airbus DS, USDA, USGS, AEX, and the GIS User Community